

County Production Meeting

CST Corn/Soybean Performance Data, 2015



Summary of efforts of 34 agents & 90+TN/KY producers in 36 counties.

Harvesting a total of 3,229 plots.

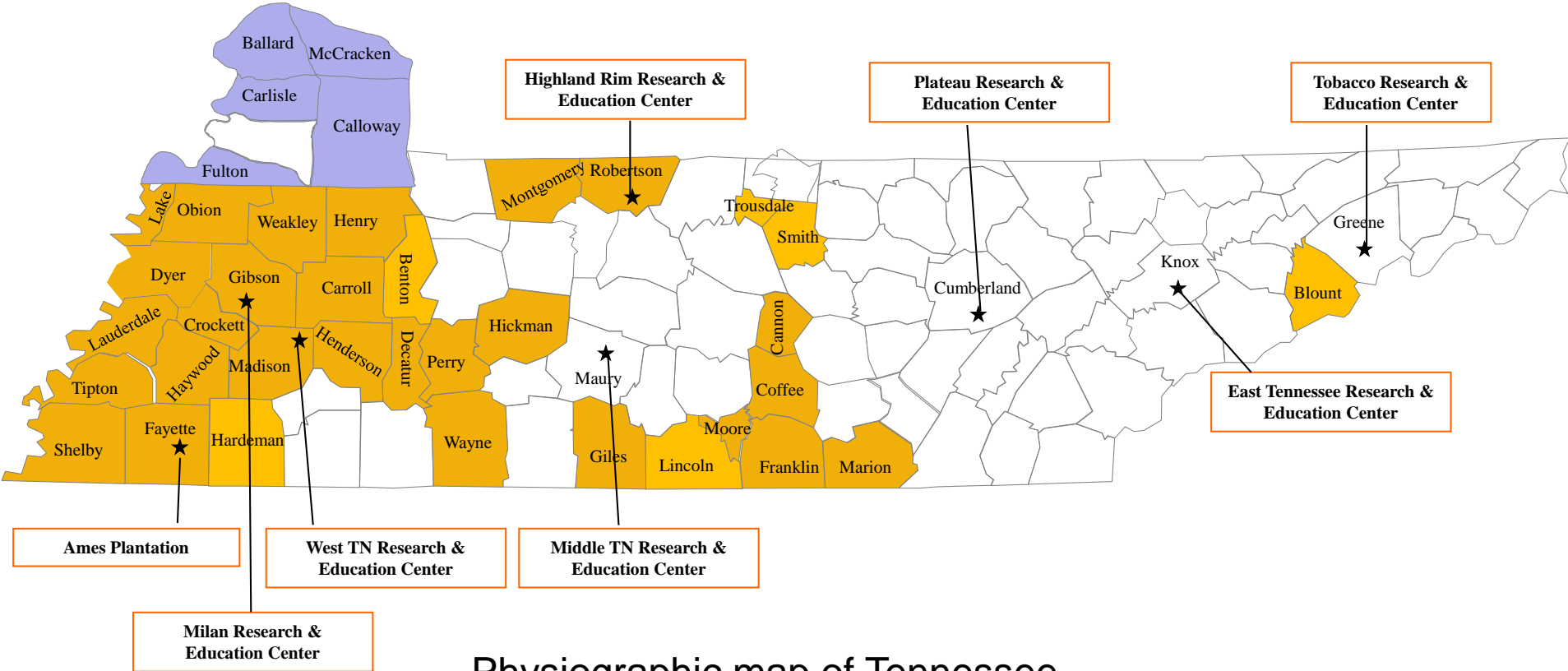
Corn	68 Hybrids	13 Companies	61 Locations	1,304 plots
Soybean	95 Varieties	13 Companies	70 Locations	1,417 plots
Wheat	24 Varieties	9 Companies	9 Locations	288 plots
Cotton	14 Varieties	4 Companies	14 Locations	220 plots



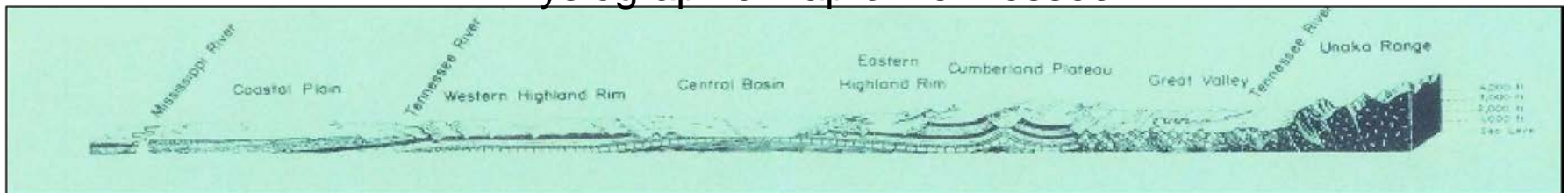
AGRONOMIC VARIETY TESTING

COUNTIES AND RESEARCH & EDUCATION CENTERS

Kentucky Counties



Physiographic map of Tennessee



2014 Impacts/Implications (6 County Area)

Producer adoption (92%) of planting superior performing hybrids/varieties identified from the CST resulted in some \$40.7 million additional income without increasing cost. The \$40.7 million increase resulted from an increase of: 9.0 bu/Acre or \$33.75/Acre for corn, 5.0 bu/Acre or \$53/Acre for beans and 5.0 bu/Acre or \$28.15/Acre for wheat, in 2014.

Certified acreage data is incomplete for computing the 2015 crop dollar impacts, however yield impacts arising from producer adoption of the CST for the 2015 crop are 13 bu./Acre for corn, and bean. Wheat impacts will not be available until the 2016 harvest is completed.

Private Seed Companies invested over \$299,000 in seed and \$74,750 other cost in support of the CST program.

Corn= \$122,250, Cotton= \$98,000, Soybeans= \$70,850 and Wheat= \$7,920

2014 STANDARD EARLY SEASON ROUNDUP/STACKED CORN HYBRID TEST (108-113 DAY)

Tennessee & West Kentucky
(29 Hybrids X 14 Locations)

Legend

157	Location yield
157	Top yield
157	Yield above avg



MS	BRAND/HYBRID	AvgYld	Moist	TWt¶	Ball	Coff	Croc	Faye	Fran	Fult	Gibs	Giles	Hen1	Hen2	Laud	Madi	Obio	Weak	
		bu/a	%	lb/bu	5/6 §	4/2	4/17	4/15	4/23	5/6	4/21	5/5	4/18	5/22	5/20	4/17	4/15	4/21	
A	LG Seeds LG5618 STXRIB	215	16.4	59.4	194	255	157	194	182	214	196	209	260	213	229	184	259	257	12
AB	Armor 1330PRO2	211	16.1	59.6	211	236	158	175	177	198	226	198	248	206	218	210	239	252	10
ABC	AgriGold A6472 VT3PRIB	210	16.2	59.2	205	241	159	165	203	202	213	250	231	186	227	194	246	222	12
ABCD	AgriGold A6501 VT2RIB	206	17.1	60.2	192	245	144	148	182	220	246	186	230	187	185	208	273	232	7
ABCD	AgriGold A6517 VT3PRIB	205	16.1	55.9	189	226	138	170	198	207	182	245	231	209	205	193	238	240	9
ABCDE	LG Seeds LG2555 VT3PRIB	204	15.8	56.8	190	220	141	152	182	219	192	197	231	208	249	185	244	248	7
ABCDE	Warren Seed DS9610 3000GT	204	15.8	58.0	180	217	130	147	178	217	241	224	237	187	242	187	240	233	9
ABCDEF	Stine 9739 VT3PRO	204	16.6	55.8	201	190	150	168	160	216	211	238	228	193	252	183	246	216	10
ABCDEFG	AgriGold A6499 VT2RIB	204	16.2	59.8	200	224	148	142	195	209	183	221	243	182	250	180	245	229	11
BCDEFG	Terral 22BHR43	203	16.3	59.9	203	254	162	166	211	195	174	199	233	200	201	189	246	214	9
BCDEFG	Dyna-Gro D52VC91 GENVT2P	202	15.8	59.3	195	213	149	179	182	200	184	235	237	187	232	166	237	226	8
BCDEFG	Dekalb DKC62-08 GENSS	202	15.6	57.8	202	203	179	173	184	224	218	162	234	200	212	151	242	237	9
BCDEFG	Augusta A5658 GTCBLLD	201	16.2	57.4	186	213	158	172	198	201	188	228	216	181	237	169	245	218	6
BCDEFG	Beck 5828AM	200	15.8	58.8	193	224	136	170	193	192	210	228	230	169	235	189	238	199	8
BCDEFG	Terral 18BHR84	200	16.0	58.6	179	230	141	169	196	190	181	222	237	166	248	167	242	232	8
BCDEFG	Augusta A5262 GTCBLLD	200	16.4	56.3	191	218	131	135	171	203	211	208	235	215	223	185	246	227	7
CDEFGH	Warren Seed DS9111 SSX	199	15.9	58.1	198	215	159	147	187	222	184	203	219	186	224	191	244	212	8
DEFGH	Dekalb DKC62-77 VT3PRIB	199	16.1	58.3	201	213	150	177	178	203	191	220	219	199	228	159	233	216	6
DEFGH	Croplan 6640 VT3	199	16.1	59.3	203	241	151	162	166	205	197	177	249	181	196	176	246	235	8
DEFGH	Mycogen 2V777 SSX	199	15.9	56.3	171	219	154	173	188	208	186	259	217	198	207	153	236	216	6
DEFGHI	Steyer 11209 VT2PRORIB	197	16.1	59.2	202	227	142	177	189	186	219	200	227	180	195	186	224	207	6
DEFGHI	Dyna-Gro D53VC13 GENVT2P	195	16.4	58.6	169	234	153	162	161	193	192	201	229	178	210	165	249	236	4
DEFGHI	Croplan 6265 VT2PRIB	195	15.7	59.0	208	220	152	167	184	204	174	228	236	155	225	153	217	203	7
DEFGHI	Mycogen 2V714 SSX	194	15.7	57.2	206	194	148	156	184	213	181	214	232	164	206	168	241	214	5
EFGHI	Warren Seed DS9212 SSX	194	15.7	57.1	193	226	156	155	201	204	185	230	224	145	175	178	221	218	7
FGHI	Beck 6348A3 3000GT	193	16.4	57.6	188	217	141	165	177	206	196	215	218	186	166	166	236	225	6
GHI	Stine 9741 EVT3PRO	192	16.4	56.5	175	218	136	163	212	168	162	230	218	185	190	183	233	222	3
HI	Armor 1314	188	15.8	58.6	195	203	133	149	193	203	162	215	222	175	191	172	212	214	3
I	Steyer 11103 VT2PRORIB	187	15.9	58.8	163	179	127	167	177	194	182	203	223	184	224	168	231	199	2
	Average (bu/a)	200	16.1	58.2	193	221	148	164	186	204	195	215	231	186	217	178	240	224	

2015 STANDARD EARLY SEASON ROUNDUP/STACKED CORN HYBRID TEST (108-113 DAY)

Tennessee & West Kentucky
(24 Hybrids X 15 Locations)

Legend

157 Location yield

157 Top yield

157 Yield above avg



MS	BRAND/HYBRID	AvgYld	Moist	Tst Wt	Callo	Coff	Dyer (IR)	Fayette (IR)	Gibso	Giles	Henry (T)	Henry (Br)	Hender	Lake	Lauder	Madis	Obion (IR)	Tipt	Weak	
		bu/a	%	lb/bu	5/5†	5/5	4/22	4/22	4/15	5/4	5/4	4/29	4/28	5/1	5/15	4/24	5/2	4/23	4/28	
A	*AgriGold A6499 STXRIB	218	15.7	60.2	225	236	253	186	212	217	255	264	193	196	184	219	251	170	228	15
A	Croplan 6640 VT3P/RIB	217	14.9	59.5	216	241	266	196	206	225	248	279	178	204	166	187	256	175	216	12
AB	*Armor 1330 PRO2	216	15.1	60.1	227	235	244	187	190	222	230	266	206	189	187	193	267	170	220	12
ABC	DeKalb DKC 62-08 GENSS	215	15.0	59.0	231	239	267	176	204	215	256	262	176	181	192	203	245	179	199	12
ABCD	Dyna-Gro 52VC91 GenVT2P	213	14.8	61.7	219	245	230	197	199	210	240	256	162	199	192	175	260	187	221	12
ABCDE	Terral 23BHR55	212	15.3	58.5	242	239	285	199	178	192	278	231	188	211	141	203	256	148	192	9
ABCDE	Beck's 6365 AM	212	15.2	58.3	248	209	283	207	183	213	260	225	204	210	179	176	240	128	215	9
BCDEF	LG Seeds LG5618 VT2RIB	208	15.1	60.9	205	242	225	194	194	208	253	258	161	204	168	184	236	162	219	9
BCDEF	AgriGold A6517 VT3RIB	207	15.7	57.2	219	229	255	196	191	188	246	239	165	194	194	192	225	156	217	10
CDEFG	Dyna-Gro 50VC43 GenVT2P	206	14.7	59.1	222	232	259	188	190	201	241	252	176	182	168	198	248	131	199	10
DEFG	Terral 18BHR84	205	15.1	59.1	225	247	247	199	172	215	227	232	165	194	158	180	246	145	217	8
DEFGH	Beck's 5828 AM	204	15.1	59.4	230	238	222	179	168	211	228	229	160	196	173	216	235	162	213	8
DEFGH	Warren Seed 9610 3000GT	204	15.0	57.5	195	230	227	194	189	191	249	257	167	184	156	218	241	146	210	8
EFGH	Croplan 6065 SS/VT2P/RIB	203	14.6	59.5	221	231	248	180	188	226	224	230	133	185	186	206	249	144	194	8
EFGH	Armor 1033 PRO2	203	14.8	59.6	225	229	251	186	188	203	222	226	148	187	163	181	242	178	214	7
FGH	Mycogen 2V714 SSX	200	15.2	56.3	214	219	253	174	177	174	233	233	160	188	165	188	275	159	191	3
FGH	Steyer 11208 VT2PRORIBC	200	15.1	59.8	202	226	257	171	174	221	221	234	163	182	183	181	220	156	207	4
FGH	Croplan 6265 SS/VT2P/RIB	200	14.9	59.6	217	233	222	183	191	194	217	222	185	175	181	182	235	157	202	6
FGH	Augusta A5262 GTCBLLD	199	15.7	57.4	224	229	247	167	173	199	231	234	141	191	174	197	240	139	204	5
FGH	AgriGold A6488 VT2RIB	199	14.8	59.1	204	229	239	176	191	208	222	233	154	183	174	177	216	166	215	5
FGH	Warren Seed 9212 SSX	198	14.9	57.4	200	213	216	165	185	221	227	227	174	181	174	199	253	150	206	5
GHI	Mycogen 2Y744 RR2	197	14.8	55.4	181	211	262	211	179	186	224	245	174	180	176	174	213	114	225	6
HI	Warren Seed 9111 SSX	195	14.9	58.4	206	223	203	178	165	184	219	256	185	186	155	182	226	143	206	2
I	Steyer 11103 VT2PRORIBC	188	14.8	59.7	198	221	241	168	180	190	223	228	122	167	168	172	220	136	185	0
	Average	205	15.1	58.9	217	230	246	186	186	205	236	242	168	190	173	191	241	154	209	

2015 Early Season Poorly Drained (4 Locations)

MS	HYBRID	Avg Yld
A	Becks 6365	241
AB	DeKalb DKC 62-08	240
AB	Terral 23BHR55	240
ABC	AgriGold A6499	236
ABCD	Croplan 6640	234
ABCD	Armor 1330	232
ABCD	Mycogen 2V714	232
ABCD	Dyna-Gro 52VC91	231
ABCD	AgriGold A6517	230
ABCD	Dyna-Gro 50VC43	229
ABCD	Croplan 6065	227
ABCD	Augusta A5262	223
ABCDE	LG Seeds LG5618	221
ABCDE	Steyer 11208	220
ABCDE	Armor 1033	220
ABCDE	Terral 18BHR84	220
BCDE	Mycogen 2Y744	219
CDE	Warren Seed 9610	218
CDE	Warren Seed 9212	218
CDE	Becks 5828	215
DE	Croplan 6265	214
DE	Steyer 11103	213
DE	AgriGold A6488	213
E	Warren Seed 9111	201
Average		224

2015 Early Season Well Drained (11 Locations)

MS	HYBRID	Avg Yld
A	AgriGold A6499	213
AB	Croplan 6640	211
ABC	Armor 1330	210
ABCD	Dyna-Gro 52VC91	206
ABCD	DeKalb DKC 62-08	206
ABCDE	LG Seeds LG5618	203
BCDE	Terral 23BHR55	202
BCDE	Becks 6365	202
CDEF	Becks 5828	200
CDEFG	Terral 18BHR84	199
DEFG	AgriGold A6517	199
DEFG	Warren Seed 9610	198
DEFG	Dyna-Gro 50VC43	197
DEFG	Armor 1033	197
EFG	Croplan 6265	195
EFG	Croplan 6065	194
EFG	AgriGold A6488	194
EFG	Warren Seed 9212	193
EFG	Steyer 11208	192
EFG	Warren Seed 9111	192
FG	Augusta A5262	191
GH	Mycogen 2Y744	189
GH	Mycogen 2V714	189
H	Steyer 11103	179
Average		198

2014 STANDARD MEDIUM SEASON ROUNDUP/STACKED CORN HYBRID TEST (114-116 DAY)

Tennessee & West Kentucky
(29 Hybrids X 16 Locations)



Legend

- 157 Location yield
- 157 Top yield
- 157 Yield above avg

MS	BRAND/HYBRID	AvgYld	Moist	TWt%	Carl	Deca	Faye	Fran	Fulton	Gibs	Hayw	Henr1	Henr2	Hick	Lake	Madi	Mont	Robe	Shel	Weak	
		bu/a	%	lb/bu	4/15 §	5/5	4/11	4/24	5/6	4/21	5/7	4/18	5/22	5/6	4/24	4/12	4/22	4/24	4/22	4/26	
A	LG Seeds LG5701 VT2RIB	202	16.4	59.5	182	184	260	248	214	206	124	240	211	219	144	204	161	164	233	242	13
AB	*Dyna-Gro D55VC77 GENVT2P	202	16.2	59.6	182	215	241	255	203	190	136	242	205	218	186	197	166	161	221	209	14
ABC	Beck 6626AM	201	16.2	59.8	185	178	251	250	223	189	124	251	215	205	191	189	171	159	226	207	13
ABCD	**Armor 1550PRO2	200	16.3	59.9	180	213	237	245	227	194	130	234	188	227	147	209	174	162	213	223	14
ABCDE	*Terral 24BHR93	198	16.2	59.5	184	180	250	236	213	191	130	257	207	203	170	201	168	145	224	214	12
ABCDEF	Warren Seed DS9713 SSX	197	16.3	56.7	190	173	237	237	223	192	134	233	228	210	193	175	161	155	200	213	10
ABCDEF	Dyna-Gro D56VC46 GENVT2P	197	17.1	58.5	158	199	236	238	220	182	124	233	230	229	165	197	165	172	191	213	11
ABCDEF	AgriGold A6573 VT3PRIB	197	16.1	57.4	162	195	259	235	228	168	126	236	197	199	195	193	162	154	219	223	9
ABCDEF	Dekalb DKC66-42 VT2P	197	16.2	58.5	169	198	230	259	210	188	114	250	183	217	178	186	162	155	227	222	7
ABCDEFG	AgriGold A6559 VT2RIB	196	15.8	59.5	180	199	256	225	228	192	107	234	190	225	148	170	171	169	213	226	11
ABCDEFG	Mycogen 2C797 SSX	194	15.9	57.7	178	184	239	231	209	189	128	232	201	218	155	190	156	172	183	238	9
ABCDEFG	Steyer 11407 VT2PRORIB	194	16.3	60.1	183	180	233	232	205	198	120	237	196	209	150	193	174	155	224	216	8
BCDEFG	Dekalb DKC64-69 GENVT3P	193	16.0	59.1	186	201	239	235	214	191	113	240	211	195	127	186	171	164	218	204	9
BCDEFG	Beck 6542A4	193	17.0	56.4	183	151	228	236	206	184	131	241	210	228	165	178	173	142	225	213	8
CDEFG	Croplan 6960 VT3P	193	16.0	60.3	195	177	221	246	207	195	122	243	213	198	132	189	161	161	215	210	9
CDEFG	Augusta A5664 GT3000D	192	17.0	57.9	166	187	217	221	208	194	121	211	223	223	158	200	169	157	208	215	9
DEFG	Augusta A5566 GTCBLLD	192	17.7	58.5	179	175	238	243	217	182	107	211	197	223	172	190	161	146	201	228	8
DEFG	Dyna-Gro D54VC81 GENVT2P	192	16.2	59.9	168	188	236	223	226	184	118	247	201	193	165	166	160	156	222	212	6
DEFG	Mycogen 2C786 SSX	192	16.1	58.1	189	173	231	245	220	190	116	170	213	219	172	190	171	159	201	205	10
EFG	Croplan 7087 VT2PRO	191	16.1	58.6	147	143	247	260	222	191	97	238	204	194	154	195	164	153	240	215	9
EFG	Warren Seed DS9314 SSX	191	16.3	57.9	182	153	228	237	223	191	116	220	198	215	174	192	169	163	197	199	9
EFG	Armor 1616PRO3	191	16.8	58.4	177	191	248	240	214	193	109	224	178	198	186	183	171	129	206	207	7
EFG	Augusta A5565 VT2PROD	191	16.5	59.7	179	179	223	240	223	183	121	237	186	195	163	197	155	156	213	199	8
EFG	Beck 6948A3	191	16.9	57.7	170	185	196	224	207	191	115	232	202	204	165	211	162	149	217	220	6
FGH	Dekalb DKC66-97 GENVT2P	190	16.3	58.5	169	165	228	239	211	185	104	246	171	213	185	179	161	152	206	224	5
FGH	Armor 1555PRO2	190	16.4	59.7	172	170	218	225	218	181	121	232	198	199	175	179	156	154	221	217	5
FGH	Steyer 11604 VT2PRORIB	189	17.0	58.3	174	187	235	216	190	191	123	218	215	199	172	187	168	152	191	214	8
GH	Warren Seed DS9311 SSX	188	15.5	56.7	174	165	245	216	204	189	120	227	199	212	163	177	157	168	177	211	5
H	Stine 9806 EVT3PRO	182	16.7	56.6	180	169	219	209	223	174	114	227	199	194	153	184	171	139	173	177	3
	Average (bu/a)	194	16.4	58.6	177	181	235	236	215	189	120	233	202	210	166	189	165	156	210	214	

2015 STANDARD MEDIUM SEASON ROUNDUP/STACKED CORN HYBRID TEST (114-116 DAY)

Tennessee & West Kentucky
(28 Hybrids X 23 Locations)

Legend

157	Location yield
157	Top yield
157	Yield above avg



MS	BRAND/HYBRID	Avg Yld	Moist %	TstWt lb/bu	Cann 5/7	Coff 5/5	Dyer (IR) 4/22	Faye (IR) 5/6	Gibs 4/11	Hard 4/28	Hayw 5/12	Hend 4/28	Henr (T) 5/4	Henr (BR) 4/29	Hick 5/4	Lake 4/30	Laud 5/15	Madi 4/10	Obio (IR) 5/2	Perry 5/4	Robe 5/1	Smit 4/27	Tipt 4/23	Weak 5/6	Call 5/5	Carl 5/6	Mccr 5/3	
		A	AgriGold A6659 VT2RIB	214	16.5	58.9	220	225	278	256	206	247	171	157	259	277	239	196	173	270	259	248	206	230	165	112	241	265
AB	*Dyna-Gro 56VC46 GENVT2P	210	16.8	58.6	224	238	282	224	205	240	137	131	259	270	247	206	170	245	247	240	224	232	137	107	232	260	193	18
AB	DeKalb DKC 66-87 GENVT2P	210	16.5	58.4	220	227	282	252	207	248	138	134	255	284	249	175	130	260	258	226	234	248	173	126	205	251	170	16
ABC	*AgriGold A6559 VT2RIB	210	15.9	59.0	224	238	266	228	190	226	158	148	234	274	251	192	159	241	241	203	203	229	182	140	231	281	171	17
ABCD	Terral 25BHR26	208	16.4	59.5	232	240	284	226	189	203	158	157	269	256	257	188	180	228	261	219	205	246	130	101	236	239	201	14
ABCDE	*Beck's 6626AM	207	16.3	59.3	247	243	224	214	188	219	167	111	264	269	261	202	164	253	245	241	221	214	163	123	206	246	185	15
BCDEF	Augusta A6664 VT2Pro	207	15.4	58.5	228	233	256	225	206	241	166	139	242	257	231	193	144	246	264	241	205	226	173	137	210	254	157	13
BCDEF	Armor 1621 PRO2	206	16.2	57.9	223	230	261	235	200	230	167	168	247	264	242	194	169	250	235	230	210	221	148	106	214	252	165	16
BCDEF	LG Seeds LG5638VT2RIB	206	15.5	58.8	220	235	272	229	207	226	150	144	251	253	228	190	150	242	246	226	208	232	162	111	205	253	164	14
BCDEFG	Warren Seed 9713 SSX	205	17.0	56.8	204	218	245	216	190	221	173	145	257	250	210	219	183	234	262	221	200	210	168	139	211	265	172	10
BCDEFGH	DeKalb DKC 64-69 GENVT3P	204	15.7	58.8	223	238	254	212	199	245	157	158	245	245	226	188	142	247	248	245	221	242	158	99	224	239	163	13
CDEFGHI	Progeny PGY4114 VT2P	202	15.6	59.2	231	234	244	228	190	230	130	137	237	270	240	199	168	236	222	230	214	227	163	111	223	253	174	17
DEFGHI	Armor 1414 PRO2DG	202	16.2	57.8	225	243	273	227	177	232	149	145	249	270	243	189	166	231	245	232	193	198	150	104	217	239	159	13
DEFGHI	Mycogen 2C797 SSX	201	16.5	56.9	209	221	247	214	198	238	151	147	243	255	220	192	140	223	248	238	228	223	166	85	235	242	170	9
DEFGHI	Dyna-Gro 55VP77 GENVT3P	201	16.0	59.4	217	231	252	229	203	226	150	163	250	281	228	186	142	221	245	226	222	239	151	75	188	249	155	9
DEFGHI	AgriGold A6574 VT2PRO	201	15.8	59.6	222	234	249	231	209	240	155	143	262	252	216	207	140	228	240	240	228	236	155	112	197	239	139	14
DEFGHI	Mycogen 2C786 SSX	201	16.6	57.3	212	220	271	232	190	234	168	157	236	240	219	218	176	203	229	234	194	216	158	96	207	240	179	9
DEFGHI	DeKalb DKC 65-71 GENDGVT2P	201	15.5	57.4	215	233	238	238	197	244	150	162	229	252	229	182	155	239	237	244	201	224	141	108	220	259	153	10
EFGHI	Warren Seed 9314 SSX	200	16.7	57.2	205	220	263	231	189	226	155	158	237	253	222	200	162	209	230	226	174	224	163	138	213	251	162	9
EFGHI	Terral 24BHR93	200	16.2	58.7	230	246	273	205	194	207	138	132	264	234	246	204	142	250	249	207	222	217	149	60	219	251	154	10
EFGHI	Warren Seed 9412 SSX	200	16.3	56.9	211	224	241	213	204	253	156	141	249	244	214	206	162	228	229	253	202	215	192	89	214	243	160	8
FGHI	Dyna-Gro 54DC94 GENVT2PDG	199	16.0	58.0	212	251	285	223	190	225	133	122	256	246	230	181	145	225	234	225	186	218	177	117	206	253	136	5
GHI	Augusta A5664 GT3000	198	16.9	57.5	215	216	257	219	182	241	155	142	236	246	227	201	148	222	211	241	197	239	152	112	212	231	174	8
HI	Armor 1550 PRO2	197	16.0	59.9	216	219	247	218	189	229	138	124	252	265	237	164	152	231	247	229	191	222	170	93	221	255	155	7
I	Progeny PGY5115 VT2P	196	15.9	58.2	207	229	259	234	200	231	140	145	239	255	235	207	116	226	239	231	195	223	162	87	202	254	139	10
I	Steyer 11504 GENSSRIBC	195	15.8	60.0	211	220	243	208	187	201	142	145	235	264	244	207	117	225	218	201	224	231	143	106	211	244	155	6
I	Steyer 11407 VT2PRORIBC	195	16.0	59.8	223	224	250	217	185	213	156	125	250	250	236	191	144	221	220	213	204	215	154	132	192	241	161	5
J	Beck's 6948A3	186	17.3	57.0	209	226	204	204	176	221	154	134	218	234	211	181	143	209	207	221	194	215	147	117	214	237	161	2
	Average	202	16.2	58	219	231	257	225	195	230	152	143	247	258	234	195	153	234	240	230	207	225	159	109	215	250	164	

2015 Medium Season
Poorly Drained (12 Locations)

MS	HYBRID	Avg Yld
A	Dyna-Gro 56VC46 GENVT2P	206
A	AgriGold A6659 VT2RIB	206
AB	Terral 25BHR26	204
AB	Warren Seed 9713 SSX	203
ABC	AgriGold A6559 VT2RIB	200
ABC	Mycogen 2C786 SSX	199
ABCD	Warren Seed 9314 SSX	198
ABCDE	DeKalb DKC 66-87 GENVT2P	197
ABCDE	LG Seeds LG5638VT2RIB	197
ABCDE	Armor 1621 PRO2	195
ABCDEF	Armor 1414 PRO2DG	194
BCDEFG	Beck's 6626AM	194
BCDEFG	Augusta A6664 VT2Pro	193
CDEFG	Progeny PGY4114 VT2P	191
CDEFG	DeKalb DKC 65-71 GENDGVT2P	191
CDEFG	AgriGold A6574 VT2PRO	190
CDEFG	Dyna-Gro 54DC94 GENVT2PDroughtGard	190
CDEFG	DeKalb DKC 64-69 GENVT3P	190
CDEFG	Terral 24BHR93	190
CDEFG	Dyna-Gro 55VP77 GENVT3P	189
CDEFG	Augusta A5664 GT3000	189
CDEFG	Mycogen 2C797 SSX	188
DEFG	Warren Seed 9412 SSX	187
DEFG	Progeny PGY5115 VT2P	187
EFG	Steyer 11407 VT2PRORIBC	186
FGH	Steyer 11504 GENSSRIBC	183
GH	Armor 1550 PRO2	183
H	Beck's 6948A3	174
Average		193

2015 Medium Season
Well Drained (11 Locations)

MS	HYBRID	Avg Yld
A	DeKalb DKC 66-87 GENVT2P	232
AB	AgriGold A6659 VT2RIB	230
ABC	Dyna-Gro 56VC46 GENVT2P	227
ABC	AgriGold A6559 VT2RIB	226
ABC	Beck's 6626AM	226
ABCD	DeKalb DKC 64-69 GENVT3P	224
ABCDE	Progeny PGY4114 VT2P	223
ABCDE	Augusta A6664 VT2Pro	223
BCDEF	Armor 1621 PRO2	221
BCDEF	Terral 25BHR26	220
CDEFG	LG Seeds LG5638VT2RIB	220
CDEFG	AgriGold A6574 VT2PRO	220
CDEFG	Mycogen 2C797 SSX	220
CDEFG	Terral 24BHR93	219
CDEFG	Dyna-Gro 55VP77 GENVT3P	219
CDEFGH	Warren Seed 9412 SSX	218
CDEFGHI	DeKalb DKC 65-71 GENDGVT2P	218
CDEFGHI	Armor 1550 PRO2	217
DEFGHI	Armor 1414 PRO2DG	216
DEFGHI	Dyna-Gro 54DC94 GENVT2PDroughtGard	215
DEFGHI	Progeny PGY5115 VT2P	215
EFGHI	Steyer 11504 GENSSRIBC	215
FGHIJ	Augusta A5664 GT3000	214
GHIJ	Steyer 11407 VT2PRORIBC	211
GHIJ	Warren Seed 9713 SSX	211
HIJ	Warren Seed 9314 SSX	209
IJ	Mycogen 2C786 SSX	208
J	Beck's 6948A3	205
		219

2014 STANDARD FULL SEASON ROUNDUP/STACKED

CORN HYBRID TEST (>116 DAY)

Tennessee & West Kentucky
(13 Hybrids X 13 Locations)

Legend

157	Location yield
157	Top yield
157	Yield above avg

MS	BRAND/HYBRID	AvgYld	Moist	TWt	Faye	Frank	Fulton	Gibs	Henr1	Henr2	Lake	Laud	Madi	Obion	Shelby	Tipton	Weak	
		bu/a	%	lb/bu	4/11 §	4/23	5/6	4/21	4/15	5/22	5/6	5/9	4/11	4/15	4/22	4/24	4/23	
A	*Croplan 8621 VT2P	206	16.7	57.4	236	189	190	212	229	227	196	175	192	255	225	104	249	10
A	*Augusta A7767 VT3PROD	204	17.7	57.3	221	173	184	192	229	203	200	164	224	252	227	108	271	10
AB	**Dyna-Gro D57VP51 VT3P	204	17.0	58.7	218	186	194	183	225	209	206	186	221	252	215	81	272	9
ABC	*Dekalb DKC67-58 VT2P	201	17.9	59.4	236	170	188	190	220	196	220	154	203	246	217	117	256	9
ABC	**AgriGold A6659 VT2RIB	199	17.5	58.8	226	156	188	186	204	228	217	128	232	252	200	85	279	7
ABC	Dekalb DKC69-31 VT2P	198	17.7	58.1	249	145	185	186	218	193	195	149	220	241	238	78	275	7
ABCD	*Terral 27HR83	197	17.8	58.7	252	158	185	189	230	210	189	159	193	215	240	80	259	7
ABCD	**Croplan 8410 VT3P	197	17.1	59.5	227	164	189	188	212	194	182	188	217	252	203	83	256	5
ABCD	*Armor 1880 PRO2	196	16.7	59.5	231	162	197	182	221	205	190	181	166	243	224	94	252	7
BCD	Steyer 11801 VT2PRORIB	193	17.0	58.8	212	165	184	177	224	218	220	119	196	237	226	76	253	5
CD	Croplan 7927 VT3	191	16.9	58.5	218	164	176	168	236	208	194	163	170	237	239	71	245	4
CD	Warren Seed DS9217 SSX	191	18.8	57.7	230	139	175	163	205	208	185	170	213	231	210	109	243	5
D	Mycogen 2H877 SSX	186	17.6	56.1	233	175	167	171	188	182	187	181	189	205	200	81	260	4
	Average (bu/a)	197	17.4	58.3	230	165	185	184	219	206	199	163	203	240	220	90	259	

2015 STANDARD FULL SEASON ROUNDUP/STACKED

CORN HYBRID TEST (>116 DAY)

Tennessee & West Kentucky
(16 Hybrids X 17 Locations)



Legend

157	Location yield
157	Top yield
157	Yield above avg

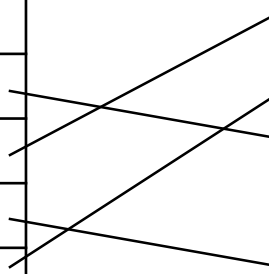
MS BRAND/HYBRID		Avg Yld	Moist	TstWt	Call, Ky	Cannon	Croc	Dyer (IR)	Faye (IR)	Gibson	Giles	Hend	Henr (T)	Henr (Ba)	Lake	Laud	Madi	Mont	Obion (IR)	Tipton	Weak (IR)	
		bu/a	%	lb/bu	5/5†	5/7	5/7	4/22	5/6	4/15	5/4	4/28	5/4	4/29	5/2	5/15	4/10	6/15	5/2	4/23	5/6	
A	**Terral 27HR83	214	16.9	59.7	252	217	178	279	219	201	219	142	269	219	219	184	221	174	256	188	207	16
A	***Dyna-Gro D57VP51 VT3P	212	16.1	59.0	219	212	189	280	236	206	206	155	257	226	209	182	208	161	266	181	210	14
AB	**Croplan 8621 VT2P	210	16.2	57.7	234	233	161	277	216	200	240	158	272	212	226	176	214	126	247	188	196	14
ABC	DeKalb DKC 67-72 GENVT2P	208	16.9	58.2	217	187	184	275	247	201	204	170	263	203	218	199	204	130	240	179	221	13
ABCD	**Augusta A7767 VT3PROD	206	16.9	58.1	220	204	185	274	236	209	210	146	270	222	208	187	185	119	227	189	211	12
BCDE	Steyer 11702 3000GT	202	17.9	58.4	233	223	159	260	208	195	214	146	250	223	205	161	181	114	247	195	214	9
CDEF	Croplan 8512 DG/VT2P/RIB	201	15.9	57.9	199	209	173	247	179	203	219	138	247	226	220	166	210	149	245	191	189	10
DEFG	AgriGold A6719 VT2PRO	198	16.6	59.3	214	219	143	257	219	193	197	143	262	205	192	185	211	144	235	180	168	8
DEFG	Croplan 7927 VT3P/RIB	198	16.1	57.8	209	222	151	253	231	184	204	144	254	204	200	157	174	163	268	172	174	7
DEFG	Beck's 6873 AM	197	16.9	60.2	227	228	169	265	210	197	192	145	255	161	218	137	183	169	237	174	181	9
EFGH	Dyna-Gro 57DC58 VT2Pdrought	196	16.1	58.0	212	201	165	255	212	197	213	124	254	206	212	166	198	103	228	202	186	8
EFGH	Armor 1880 PRO2	196	16.2	59.9	197	205	150	254	242	193	214	147	243	196	195	165	177	145	239	178	184	4
FGH	Progeny PGY4117 VT3P	192	16.5	58.2	205	196	175	257	202	185	201	151	244	143	218	162	189	140	217	194	187	4
GH	Mycogen 2D848 SSX	191	18.1	58.1	200	181	152	238	207	185	197	145	235	178	208	169	191	150	222	181	209	3
GH	Warren Seed 9217 SSX	191	18.2	57.7	186	194	144	239	229	192	195	134	234	202	209	181	163	117	242	188	194	6
H	Augusta A8868 VT3PRO	187	16.3	57.9	200	215	154	256	188	189	213	108	255	153	221	164	187	119	225	163	171	3
	Average	200	16.7	58.5	214	209	165	260	218	196	209	144	254	199	211	171	194	139	240	184	194	

2015 Full Season
 Poorly Drained Soil (8 locations)

2015 Full Season
 Well Drained Soil (9 locations)

MS	HYBRID	Avg. Yld
A	DeKalb 67-72	231
A	Dyna-Gro 57VP51	227
AB	Terral 27HR83	222
AB	Augusta 7767	222
ABC	Croplan 8621	220
BCD	Steyer 11702 3000GT	212
BCD	Croplan 7927	212
BCD	Armor 1880	211
BCD	Agrigold 6719	210
CDE	Warren Seed 9217 SSX	208
DE	Beck's 6873 AM	204
DE	Dyna-Gro 57DC58	204
DE	Mycogen 2D848	204
DE	Progeny PGY4117 VT3P	203
DE	Croplan 8512	202
E	Augusta 8868	195
Average		212

MS	HYBRID	Avg. Yld
A	Terral 27HR83	213
A	Croplan 8621	212
AB	Dyna-Gro 57VP51	206
AB	Croplan 8512	206
AB	Augusta 7767	204
ABC	Steyer 11702 3000GT	203
ABCD	Dyna-Gro 57DC58	201
BCDE	DeKalb 67-72	200
BCDEF	Agrigold 6719	195
BCDEF	Beck's 6873 AM	194
CDEF	Croplan 7927	191
DEF	Progeny PGY4117 VT3P	190
DEF	Armor 1880	189
EF	Augusta 8868	188
F	Mycogen 2D848	186
F	Warren Seed 9217 SSX	186
Average		198



Early, medum, Full Separations: Dyer, Gibson, Henry, Tipton

MS group	HYBRID	Avg Yld	Moist	TstWt	MG	RM
		bu/a	%	lb/bu	EMF	DAP
A	**Augusta 7767	236	17.3	58.8	full	117
AB	**Croplan 8621	234	16.5	59.2	full	117
AB	**Terral 27HR83	234	17.7	60.5	full	117
ABC	***Dyna-Gro 57VP51	231	16.5	60.1	full	117
ABCD	DeKalb 67-72	230	17.1	58.9	full	117
ABCD	DeKalb DKC 66-87 GENVT2P	229	16.8	59.1	med	116
ABCDE	Dyna-Gro 57DC58	227	15.9	59.6	full	117
ABCDE	AgriGold A6659 VT2RIB	227	16.2	59.6	med	116
ABCDE	Dyna-Gro 54DC94 GENVT2PDroughtGard	227	16.2	59.2	med	114
ABCDEF	DeKalb DKC 62-08	227	15.5	59.9	earl	112
ABCDEF	Steyer 11702 3000GT	225	18.7	59.0	full	117
ABCDEF	Croplan 6640	224	15.4	59.8	earl	113
ABCDEF	AgriGold 6719	223	16.8	59.9	full	118
ABCDEF	LG Seeds LG5638VT2RIB	223	15.3	60.2	med	114
ABCDEF	Beck's 6873 AM	223	16.8	60.5	full	118
ABCDEF	*AgriGold A6499	223	16.1	60.6	earl	114
ABCDEF	Terral 23BHR55	222	15.5	58.2	earl	113
ABCDEF	Croplan 8512	222	16.1	59.7	full	117
ABCDEF	Warren Seed 9412 SSX	222	16.1	58.4	med	114
ABCDEF	*Dyna-Gro 56VC46 GENVT2P	221	17.1	58.5	med	116
ABCDEF	Progeny PGY4117 VT3P	220	17.3	58.9	full	117
ABCDEF	Terral 24BHR93	220	16.4	59.1	med	114
ABCDEF	AgriGold A6574 VT2PRO	219	15.8	60.5	med	114
ABCDEF	*AgriGold A6559 VT2RIB	218	15.5	60.2	med	113
ABCDEF	Terral 25BHR26	218	16.4	59.8	med	115
ABCDEF	Armor 1880	217	16.4	60.9	full	118
ABCDEF	Warren Seed 9217 SSX	217	16.5	60.1	full	112
CDEF	Augusta A6664 VT2Pro	216	16.2	59.2	med	114
CDEF	Augusta 8868	216	17.4	58.6	full	118
CDEF	Croplan 7927	216	16.5	58.4	full	119
CDEF	Progeny PGY5115 VT2P	215	15.6	59.7	med	115
CDEF	Warren Seed 9713 SSX	215	17.4	57.6	med	113
CDEF	Armor 1550 PRO2	215	16.0	61.7	med	115
CDEF	Dyna-Gro 52VC91	214	15.2	62.5	earl	112

MS group	HYBRID	Avg Yld	Moist	TstWt	MG	RM
CDEFGHIJKLMN	Armor 1621 PRO2	214	16.4	58.4	med	116
CDEFGHIJKLMN	DeKalb DKC 64-69 GENVT3P	214	15.7	59.5	med	114
CDEFGHIJKLMN	Dyna-Gro 55VP77 GENVT3P	214	16.0	60.4	med	115
CDEFGHIJKLMN	Mycogen 2C786 SSX	214	16.5	58.5	med	114
CDEFGHIJKLMN	Becks 6365	214	15.8	57.7	earl	113
CDEFGHIJKLMN	Mycogen 2C797 SSX	214	16.6	58.1	med	114
CDEFGHIJKLMNO	Warren Seed 9314 SSX	213	16.2	58.5	med	114
DEFGHIJKLMNOP	Armor 1414 PRO2DG	212	16.4	59.1	med	114
DEFGHIJKLMNOP	AgriGold A6517	212	16.7	56.6	earl	113
EFGHIJKLMNOP	Mycogen 2D848	210	17.8	59.0	full	118
EFGHIJKLMNOP	Armor 1033	210	15.3	60.4	earl	110
EFGHIJKLMNOP	*Beck's 6626AM	210	16.1	61.6	med	116
EFGHIJKLMNOP	Steyer 11407 VT2PRORIBC	210	15.7	61.4	med	114
FGHIJKLMNOP	LG Seeds LG5618	209	15.6	60.2	earl	112
FGHIJKLMNOP	*Armor 1330	209	15.6	60.0	earl	113
FGHIJKLMNOP	Progeny PGY4114 VT2P	209	15.6	59.9	med	114
EFGHIJKLMNOP	Augusta A5664 GT3000	208	15.8	59.5	med	115
GHIJKLMNOP	Mycogen 2V714	206	15.6	57.0	earl	111
HIJKLMNOP	Dyna-Gro 50VC43	205	15.1	58.8	earl	110
IJKLMNO	AgriGold A6488	205	15.5	59.3	earl	110
JKLMNO	Warren Seed 9610	203	15.2	58.2	earl	110
KLMNO	Steyer 11208	202	15.2	60.3	earl	112
KLMNO	Steyer 11504 GENSSRIBC	202	15.3	60.7	med	115
LMNO	DeKalb DKC 65-71 GENDGVT2P	201	15.3	58.6	med	115
LMNO	Croplan 6065	201	14.8	60.0	earl	111
MNOP	Terral 18BHR84	198	15.4	59.4	earl	108
MNOP	Augusta A5262	198	16.3	56.7	earl	112
NO	Croplan 6265	197	15.3	59.8	earl	112
OP	Steyer 11103	195	14.9	60.3	earl	111
OP	Becks 5828	195	15.5	60.2	earl	112
OP	Mycogen 2Y744	195	15.3	55.3	earl	113
P	Warren Seed 9212	195	15.5	57.0	earl	112
Q	Beck's 6948A3	186	17.8	57.7	med	119
R	Warren Seed 9111	183	15.1	58.9	earl	111
Average		213	16.1	59.3		114

2015 STANDARD MG III Late SEASON (3.6 – 3.9 MATURITY) RR SOYBEAN VARIETY TEST

(12 Varieties X 6 Locations)



Legend

75.8 Location yield

75.8 Top yield

75.8 Yield above avg

MS	Brand/Variety	AvgYld	Moist	Dyer	Franklin	Gibson	Henry	Lake (IR)	Madison	
		bu/a	%	5/4	6/4	5/6	5/5	5/6	5/8	
A	Terral REV 38R10	67	11.9	77	36	63	77	83	63	4
A	Terral REV 39A35	66	11.8	82	41	66	76	81	49	5
A	Beck's 393R4	66	12.1	74	41	65	80	82	52	5
A	Asgrow AG3832 GENRR2Y	66	11.8	81	43	55	83	82	52	5
AB	Armor AR3905RR2	65	12.2	84	45	60	72	83	47	4
AB	Asgrow AG3931 GENRR2Y	65	12.2	84	50	55	76	73	53	3
AB	Croplan R2C 3984	65	12.1	84	38	56	80	82	47	3
AB	Mycogen 5N393R2 RR2	64	12.2	83	34	59	76	83	48	4
AB	Armor 37-R33R2	62	11.9	79	49	57	77	72	39	2
AB	USG 73P93R	62	12.0	87	40	58	73	76	37	1
AB	Warren Seed 3838 R2Y	61	11.9	79	36	63	74	70	46	1
B	Warren Seed 3780 R2Y	60	11.8	76	39	49	76	74	43	0
	Average	64	12.0	81	41	59	77	78	48	

Treated plots sprayed with Quadris TOP @ 8 oz./Acre + 1% Induce @ R3 growth stage.
RECM varieties planted June 5, JAX planted June 11

Lodging was recorded for a plot if >50% of the plants were leaning at angle $\geq 45^\circ$ and is reported on a 0 to 4 scale based on the 4 replicate plots for each variety (e.g. 4=4 of 4 plots, 3=3 of 4 plots, etc.)

Disease ratings (non-treated plots) for Frogeye at RECM are LOW ($\leq 3\%$ disease), MOD (4-9% disease), HIGH ($> 9\%$)

Jackson are LOW ($\leq 4\%$ disease), MOD (5-14% disease), HIGH ($> 14\%$).

Other diseases noted include: SC=Stem Canker, TS=Target Spot, CLB=Cercospora Leaf Blight, ' - ' indicate variety was not tested at that location

Disease ratings & yield data compiled by Dr. Heather Kelly and Jamie Jordan from replicated plots at the Research and Education Center at Milan (RECM, which is irrigated and had moderate to severe disease pressure), the West Tennessee Research and Education Center (WTREC, which is dry land and had low disease pressure due to regular crop rotation), and on-farm location in Jackson (which is dry land and had severe disease pressure). County data provided by Ryan Blair, Ext. Area Specialist, and the extension agents.

2015 STANDARD MG III LATE SEASON (3.5 - 3.9 MATURITY)

RR SOYBEAN VARIETY TEST

12 Varieties

Summary from 6 County Tests		
MS	Brand/Variety	AvgYld
		bu/a
A	Terral REV 38R10	66.5
A	Terral REV 39A35	65.8
A	Beck's 393R4	65.7
A	Asgrow AG3832 GENRR2Y	65.6
AB	Armor AR3905 RR2	65.2
AB	Asgrow AG3931 GENRR2Y	65.2
AB	Croplan R2C 3984	64.5
AB	Mycogen 5N393R2 RR2 g	63.8
AB	Armor 37-R33 RR2	62.2
AB	USG 73P93R	61.8
AB	Warren Seed 3838 R2Y It	61.3
B	Warren Seed 3780 R2Y It	59.5
	Average (bu/a)	63.9

Summary from Small Plot Research						
REC Milan				Jackson		
*Treated	Non-treated	Frogeye	Other Diseases	*Treated	Non-treated	Frogeye
-	-	-	-	47.2	47.1	LOW
57.0	48.8	LOW		50.9	49.4	MOD
53.4	50.9	LOW		51.3	48.7	LOW
55.8	52.4	MOD	TS, SC	51.3	48.8	MOD
-	-	-	-	51.5	48.0	MOD
-	-	-	-	43.2	36.6	HIGH
54.7	51.3	LOW	SC, CLB	48.6	47.6	LOW
44.0	40.5	LOW	SC	47.3	46.0	LOW
54.5	49.0	HIGH		43.7	41.0	MOD
47.8	45.6	MOD	SC, CLB	46.2	43.0	MOD
-	-	-	-	50.1	45.1	HIGH
57.8	45.2	HIGH	SC	50.6	41.7	HIGH
53.1	48.0			48.5	45.3	

2014 STANDARD MG IV EARLY SEASON (4.0 - 4.5 MATURITY)

RR SOYBEAN VARIETY TEST

(18 Varieties X 11 Locations)



Legend

- 75.8 Location yield
- 75.8** Top yield
- 75.8 Yield above avg

MS	Brand/Variety	AvgYld	Moist	Dyer	Faye	Gibs	Gile	Henr	Hick	Lake	Madi	Obio	Warr	Weak	
		bu/a	%	plant5/20	5/15	5/7	6/17	5/5	5/21	6/16	5/5	5/15	6/3	5/22	
A	Progeny P4211 RY (RR2Y)	70.3	13.1	80.4	39.1	88.3	51.8	84.5	76.4	58.6	72.8	81.4	69.3	71.1	11
A	**Mycogen 5N451 RR2Y	70.2	13.1	84.3	40.8	92.0	47.5	81.8	85.6	44.3	70.7	78.2	73.2	73.6	9
AB	Asgrow AG4533 GENRR2Y/SR	69.6	13.2	83.1	44.0	84.4	51.4	81.9	78.5	55.1	69.1	77.8	67.8	72.4	9
AB	LG Seeds C4411R2	69.3	13.1	79.3	44.9	83.9	48.3	82.5	74.8	55.5	71.7	79.3	69.7	72.3	10
AB	*Dyna-Gro 31RY45 RR2Y	69.2	12.9	82.0	40.7	90.7	48.6	80.0	85.0	40.1	70.4	82.1	67.4	74.6	9
ABC	**Armor 44-R08 RR2Y	67.7	13.0	77.5	37.2	87.6	44.7	83.5	79.2	39.5	76.4	81.3	68.9	69.2	7
ABC	Armor 43-R43 RR2Y	67.7	13.0	82.6	41.2	86.3	41.4	83.5	70.5	54.5	77.3	76.0	64.8	66.3	6
ABC	Mycogen 5N452 RR2Y	67.6	12.9	80.7	38.6	79.9	43.7	78.7	76.8	55.8	69.9	80.6	68.6	70.1	7
ABCD	Warren Seed DS 4330 R2Y	67.1	13.0	78.7	46.0	81.6	48.0	72.8	70.9	56.4	66.7	77.3	73.5	66.3	4
BCD	Steyer 4203R2 RR2Y	66.7	13.1	79.6	40.8	76.9	46.0	80.7	76.6	49.1	68.4	80.5	65.6	69.7	9
BCD	Warren Seed DS 4340 R2Y	66.1	13.2	79.4	40.9	85.9	47.2	80.1	68.0	38.5	69.5	81.8	67.9	68.2	7
CD	Beck 433R2	65.7	13.1	83.3	33.9	87.5	40.4	79.8	78.5	38.7	65.8	76.7	68.3	69.9	5
CD	Beck 444NR (RR)	65.0	13.2	79.4	34.6	73.0	45.4	70.9	79.6	48.7	68.9	77.8	68.3	68.2	3
CD	Asgrow AG4534 GENRR2Y/SR	64.7	13.1	76.9	35.2	82.6	42.5	83.1	73.3	48.7	54.4	78.5	67.4	69.4	2
CD	USG 74F53R (RR2Y/STS)	64.7	12.9	76.1	38.4	81.7	48.6	72.1	74.3	53.6	60.7	75.9	67.2	63.0	2
CD	Asgrow AG4232 GENRR2Y (STS)	64.6	13.0	74.4	41.8	78.9	39.8	74.8	73.8	52.5	63.8	77.5	69.5	63.8	3
D	Dyna-Gro 39RY43 RR2Y	64.0	13.1	77.0	33.2	82.8	44.5	77.2	75.7	50.6	51.9	76.0	68.7	66.7	2
E	Progeny P4510 RY (RR2Y/STS)	60.1	13.0	65.6	32.7	78.7	46.1	75.2	69.3	41.7	53.3	78.3	66.8	53.9	1
	Average (bu/a)	66.7	13.1	78.9	39.1	83.5	45.9	79.1	75.9	49.0	66.8	78.7	68.5	68.3	

2015 STANDARD MG IV EARLY SEASON (4.0 - 4.5 MATURITY)

RR SOYBEAN VARIETY TEST

(23 Varieties X 12 Locations)



Legend

- 75.8 Location yield
- 75.8** Top yield
- 75.8 Yield above avg

MS	Brand/Variety	AvgYld	Moist	Cannon	Crockett	Dyer	Franklin	Gibson	Giles	Henry	Madison	Obion	Perry	Weakley	MCCR, Ky	
		bu/a	%	5/20	5/13	5/7	6/4	5/6	6/10	5/5	5/8	6/12	6/8	6/17	6/4	
A	*Mycogen 5N452R2	68	12.0	77	78	81	41	61	44	76	57	90	72	71	66	9
AB	***Mycogen 5N451R2	67	11.9	70	69	84	42	65	44	80	57	86	76	74	60	9
AB	**Dyna-Gro 31RY45 RR2Y	67	12.1	71	74	80	46	62	47	73	61	91	75	52	68	8
ABC	Dyna-Gro S43RY95 RR2Y	66	12.0	71	69	77	49	62	41	82	58	84	78	67	58	10
ABCD	Mycogen 5N433R2	66	11.7	79	66	78	49	67	42	77	49	89	80	54	59	8
ABCDE	Warren Seed 43-003 R2Y	66	12.1	78	67	81	41	69	43	83	55	85	72	56	56	9
ABCDEF	Croplan R2C 4000	65	12.1	78	67	78	49	67	58	77	51	78	75	54	46	8
ABCDEFG	***Armor 44-R08 RR2	65	12.1	78	69	74	44	58	50	78	47	86	81	56	54	6
ABCDEFG	Asgrow AG4135 GENRR2Y/SR	64	12.1	73	68	81	46	66	45	80	51	85	78	52	48	9
ABCDEFG	Warren Seed 4340 R2Y	64	12.1	77	68	80	47	61	48	77	53	88	72	49	53	9
ABCDEFG	Terral REV 44A14	64	12.0	67	58	77	56	66	42	79	55	87	69	59	57	8
ABCDEFG	LG Seeds C4544R2	64	12.0	71	69	77	51	49	54	78	50	85	69	55	64	7
BCDEFG	Beck's 433R2	64	12.2	70	74	76	44	66	39	73	50	88	72	56	59	5
BCDEFG	Hornbeck CZ4590 RY	64	11.8	72	65	74	53	64	42	80	48	80	70	63	52	5
CDEFG	Beck's 418NR	63	12.1	68	62	74	44	64	49	79	53	79	66	65	51	5
DEFG	Armor AR4305 RR2	62	12.1	69	63	76	43	58	45	80	44	79	74	67	51	4
DEFG	Hornbeck CZ4181 RY	62	12.1	71	61	75	45	62	42	76	48	82	71	57	56	2
DEFG	Steyer 4303R2	62	12.1	67	63	76	50	58	49	79	48	77	70	60	48	4
EFG	Progeny P4214 RR2Y	62	12.1	73	51	73	50	58	48	78	49	78	81	52	53	5
FG	Steyer 4503R2	62	12.0	77	63	71	42	58	36	76	47	83	73	63	51	3
FG	Progeny P4211 RR2Y	62	12.1	76	62	75	53	60	36	79	49	84	63	49	54	4
FG	USG 74A33R	62	12.1	72	56	76	46	58	42	80	48	83	67	60	50	2
G	USG 74F24RS	61	12.2	75	63	78	40	52	45	77	50	85	62	54	51	4
	Average	64	12.0	73	65	77	47	61	45	78	51	84	72	58	55	

2015 STANDARD MG IV EARLY SEASON (4.0 - 4.5 MATURITY)

RR SOYBEAN VARIETY TEST

(23 Varieties X 12 Locations)



Summary from 12 County Tests			Summary from Small Plot Research													
MS	Brand/Variety	AvgYld	REC Milan					Jackson					West TN REC			
		bu/a	*Treated	Non-treated	Frogeye	Other Diseases	Lodging	*Treated	Non-treated	Frogeye	Other Diseases	Lodging	*Treated	Non-treated	Frogeye	Other Diseases
A	*Mycogen 5N452R2	67.8	60.0	56.7	LOW		2	57.4	57.1	LOW		2	54.9	54.7	LOW	SDS
AB	***Mycogen 5N451R2	67.2	-	-	-	-	-	57.8	52.8	LOW	SC	0	56.7	47.8	LOW	SDS
AB	**Dyna-Gro 31RY45 RR2Y	66.7	-	-	-	-	-	60.0	55.0	LOW	SC	2	50.1	53.8	LOW	SDS
ABC	Dyna-Gro S43RY95 RR2Y	66.3	58.4	52.5	MOD		3	51.3	47.6	MOD		1	54.1	48.0	MOD	
ABCD	Mycogen 5N433R2	65.7	59.8	52.7	MOD		3	55.2	51.6	MOD		2	48.8	47.8	MOD	SDS
ABCDE	Warren Seed 43-003 R2Y	65.5	59.2	56.7	LOW	SC, TS	0	51.0	50.2	LOW	SC, TS	0	52.3	50.4	LOW	SDS
ABCDEF	Croplan R2C 4000	64.8	62.5	54.6	HIGH		1	56.1	50.6	HIGH		2	52.5	47.3	HIGH	SDS
ABCDEFG	***Armor 44-R08 RR2	64.6	49.4	48.5	MOD	SC, CLB	2	51.9	48.3	MOD	SC	0	51.4	49.3	MOD	TS
ABCDEFG	Asgrow AG4135 GENRR2Y/SR	64.4	56.4	49.4	MOD	TS, BS	1	50.3	50.2	MOD		1	57.6	55.1	MOD	
ABCDEFG	Warren Seed 4340 R2Y	64.4	52.4	47.6	MOD	SC, CLB	0	50.3	47.3	MOD	SC, CLB	0	60.2	56.1	MOD	
ABCDEFG	LG Seeds C4544R2	64.3	58.7	52.4	LOW	SC, TS	1	53.2	50.7	LOW	SC, TS	0	54.2	51.3	LOW	TS
ABCDEFG	Terral REV 44A14	64.3	55.4	52.1	LOW		0	48.4	47.5	LOW	SC, CLB	0	55.7	53.2	LOW	SDS
BCDEFG	Beck's 433R2	63.9	55.4	49.4	LOW	SC, CLB	1	48.0	46.7	LOW	SC, CLB	0	53.4	49.9	LOW	TS
BCDEFG	Hornbeck CZ4590 RY	63.6	58.8	51.4	MOD		1	48.6	45.3	MOD		0	51.4	45.8	MOD	
CDEFG	Beck's 418NR	62.8	-	-	-	-	-	49.0	44.2	HIGH		1	48.1	46.4	MOD	SDS
DEFG	Armor AR4305 RR2	62.4	-	-	-	-	-	50.3	43.6	HIGH		0	49.4	46.9	MOD	
DEFG	Hornbeck CZ4181 RY	62.2	61.5	53.7	MOD		3	48.8	47.2	MOD		2	54.2	52.9	MOD	
DEFG	Steyer 4303R2	62.1	59.2	50.2	MOD	SC, TS	2	50.3	45.9	MOD		3	54.7	49.7	MOD	
EFG	Progeny P4214 RR2Y	62.0	58.7	47.7	HIGH		3	47.9	42.4	HIGH		0	52.7	47.0	HIGH	SDS
FG	Progeny P4211 RR2Y	61.7	-	-	-	-	-	52.9	49.4	MOD	SC, CLB	0	56.5	49.5	MOD	TS
FG	Steyer 4503R2	61.7	56.8	52.1	MOD		1	48.1	44.0	MOD		0	45.8	41.2	MOD	SDS,
FG	USG 74A33R	61.5	56.3	47.9	MOD		0	50.5	45.3	HIGH		0	53.6	47.4	MOD	
G	USG 74F24RS	61.0	57.8	51.7	MOD	SC, CLB	1	47.1	43.8	MOD		2	50.8	47.1	MOD	
	Average (bu/a)	64.0	57.6	51.5				51.5	48.1				53.0	49.5		

2014 STANDARD GROUP IV LATE SEASON (4.6 - 4.9 MATURITY)

RR SOYBEAN VARIETY TEST

(28 Varieties X 17 Locations)



Legend

75.8	Location yield
75.8	Top yield
75.8	Yield above avg

MS	Brand/Variety	AvgYld	Moist	Call	Croc	Deca	Dyer	Faye	Fran	Gibs	Hen1	Hen2	Lake	Madi	Mari	Mccr	Mont	Obio	Wayn	Weak	
		bu/a	%	plant6/26	5/6	5/21	5/20	5/15	6/26	5/7	6/2	6/19	6/16	4/23	5/6	5/20	5/15	5/15	7/3	5/27	
A	*Morsoy Xtra R2 48X02 RR2Y	65.8	13.2	45.2	85.4	72.2	81.7	41.6	50.3	85.6	45.7	67.0	64.0	84.5	74.7	67.6	44.2	77.5	59.7	72.3	15
AB	*Armor 47-R13 RR2Y/STS	65.4	13.4	49.9	74.7	65.2	78.2	47.6	49.5	81.5	44.7	67.0	70.3	89.9	73.9	71.5	41.7	80.4	66.2	59.6	14
AB	*Dyna-Gro S48RS53 (RR2Y/STS)	65.3	13.2	46.6	77.3	51.3	81.0	46.7	55.1	86.2	43.9	62.1	68.0	88.9	74.8	70.0	54.2	80.5	63.4	60.4	14
ABC	Steyer 4702R2 RR2Y	64.6	13.1	44.4	85.6	51.3	79.8	40.0	43.6	86.8	49.6	63.7	61.5	92.9	72.4	64.3	51.9	80.1	57.7	73.5	10
ABC	Warren Seed DS 4850 R2Y/STS	64.5	13.3	48.3	68.9	62.4	84.2	47.9	55.8	81.6	46.5	55.9	57.2	99.3	78.6	72.7	35.2	80.6	65.0	56.9	12
ABCD	*Asgrow AG4632 GENRR2Y/SR	64.2	13.1	42.1	76.9	60.2	80.8	42.0	49.1	86.0	55.3	60.3	67.5	79.4	83.9	56.2	39.8	79.7	64.1	67.7	12
ABCD	*Croplan R2C 4752S GENRR2Y/STS	64.1	13.6	46.1	67.0	68.8	81.3	46.2	52.0	80.8	50.8	60.3	70.8	82.5	76.3	67.5	39.8	76.6	66.0	57.5	11
ABCD	Mycogen 5N479 RR2Y/STS	64.1	13.1	49.2	76.3	52.0	80.3	44.0	52.6	85.8	42.1	64.9	62.3	101.5	74.1	69.0	44.1	76.1	56.7	58.6	12
ABCD	*Warren Seed DS 4633 R2Y	64.0	13.2	47.6	71.0	58.2	78.9	41.0	47.3	85.0	46.1	56.8	65.7	86.9	80.1	66.5	41.2	80.6	63.1	71.5	13
ABCDE	LG Seeds C4780R2 RR2/STS	63.8	13.5	48.8	73.6	59.1	82.0	47.3	46.0	80.7	47.0	63.9	66.5	85.4	73.5	70.1	37.3	80.1	63.3	60.0	13
ABCDEF	*Progeny P4850 RY/STS	63.4	13.1	42.8	82.2	64.9	81.4	48.7	50.7	83.0	42.3	61.1	63.9	80.5	77.0	70.9	35.5	80.6	56.4	56.8	10
BCDEFG	Terral REV-49R94	62.2	12.8	43.4	73.0	58.9	79.4	42.4	46.9	83.0	50.3	65.3	59.3	87.1	76.1	58.5	39.6	80.0	43.7	71.1	12
BCDEFG	Asgrow AG4934 GENRR2Y/SR	62.0	13.1	46.2	72.7	61.7	71.5	41.8	42.6	78.0	42.2	66.0	56.5	88.4	73.2	68.5	39.8	75.0	68.1	62.0	11
CDEFG	Progeny P4613 RY/STS	61.7	13.3	44.2	82.7	59.1	76.7	41.7	44.9	80.3	35.3	70.8	63.8	82.9	76.3	67.8	40.8	59.3	54.5	68.0	9
CDEFGH	Dyna-Gro S47RY13 RR2Y	61.4	13.1	40.7	69.1	58.2	75.5	39.3	46.1	81.8	46.3	47.8	53.4	90.3	70.4	66.5	42.5	79.8	66.2	69.3	8
CDEFGH	Morsoy Xtra R2 47X12 RR2Y/STS	61.3	13.3	39.7	68.9	55.4	75.7	43.0	50.0	83.5	58.3	61.5	61.1	93.0	68.7	67.1	41.7	74.9	43.1	57.0	7
CDEFGH	Armor 48-R66 RR2Y/STS	61.3	13.3	49.0	62.2	59.9	70.8	39.4	48.2	83.6	45.2	61.5	61.5	84.8	66.4	68.0	56.2	71.3	58.0	56.3	8
DEFGHI	Beck 485R2	60.8	13.2	45.8	73.7	60.9	75.0	35.9	43.2	78.6	48.1	63.4	62.8	86.9	68.2	66.7	42.7	66.1	53.7	61.4	8
DEFGHI	Beck 477NR	60.8	13.1	47.1	82.8	62.7	71.3	40.9	46.8	79.9	39.0	63.5	53.2	87.3	71.2	64.5	40.4	75.1	43.1	64.3	7
EFGHI	Croplan R2C 4873S GENRR2Y/STS	60.3	13.2	50.4	58.0	58.5	73.4	37.3	42.7	81.1	47.0	59.9	61.0	86.5	70.7	59.8	51.1	69.0	58.4	60.8	6
FGHI	Hornbeck HBK RY4721 RR2Y	59.9	13.2	43.5	81.6	48.5	74.5	43.2	45.6	77.2	28.5	63.9	61.5	82.2	78.0	62.8	40.8	72.6	60.0	53.9	5
GHI	Steyer 4802R2 RR2Y/STS	59.8	13.5	49.9	65.4	49.3	73.2	39.4	47.1	85.7	49.1	61.2	61.6	84.8	73.8	61.3	37.0	69.1	50.5	58.8	5
GHI	Croplan R2C 4801S GENRR2Y/STS	59.7	13.3	42.2	74.5	46.3	78.3	42.6	42.8	76.3	45.2	59.1	65.6	74.7	75.3	53.8	60.6	64.3	57.1	55.5	7
GHI	Mycogen 5N478 RR2Y/STS	59.5	13.4	46.1	79.3	58.0	75.7	35.3	43.7	78.9	46.5	62.4	63.6	74.1	72.0	52.8	39.6	70.6	55.3	57.8	5
GHI	Terral REV-49A14 RR2Y/STS	59.5	13.2	44.9	71.3	55.8	73.7	35.3	43.3	85.0	39.2	57.6	64.3	85.1	66.0	65.0	39.0	64.9	60.2	60.4	4
GHI	USG 74A79RS RR2Y/STS	58.9	13.1	42.5	64.5	69.5	72.7	37.7	45.5	72.2	25.2	59.8	60.5	74.6	68.4	66.6	53.5	72.7	53.6	62.2	4
HI	USG 74B83RS RR2Y/STS	58.1	13.2	48.3	61.5	45.1	68.2	35.6	39.6	82.6	44.9	59.3	66.7	79.5	70.0	63.7	38.0	71.5	58.0	55.2	5
I	Hornbeck HBK RY4620 RR2Y/STS	57.6	13.1	38.2	55.9	57.4	69.0	37.5	42.4	75.3	41.5	74.2	61.3	68.1	58.1	63.9	52.2	72.3	49.8	61.5	2
	Average (bu/a)	61.9	13.2	45.5	72.7	58.2	76.6	41.5	46.9	81.6	44.5	62.1	62.7	85.1	72.9	65.1	43.6	74.3	57.7	61.8	

2015 STANDARD GROUP IV LATE SEASON (4.6 - 4.9 MATURITY)

RR SOYBEAN VARIETY TEST

(26 Varieties X 19 Locations)



Legend

75.8	Location yield
75.8	Top yield
75.8	Yield above avg

MS	Brand/Variety	AvgYld	Moist	Benton	Carroll	Decatur	Dyer	Fayette	Franklin	Gibson	Giles	Hardeman	Haywood	Henry Bar.	Henry Wil.	Madison	Marion	Obion	Tipton	Weakley	Ballard KY	Calloway KY	
		bu/a	%	6/11	6/17	6/17	5/7	6/15	6/15	5/6	5/12	6/15	6/20	6/24	6/15	4/25	5/8	6/12	6/3	6/23	6/29	6/25	
A	**Warren Seed 4633 R2Y	59	11.7	68	44	78	79	24	78	62	46	24	43	57	68	79	70	91	59	49	55	51	16
AB	Terral REV 47R34	58	12.0	66	45	76	81	23	78	69	49	26	40	55	55	79	57	89	60	52	54	53	16
ABC	**Armor 47-R13 RR2/STS	58	12.2	63	47	78	78	30	80	60	43	32	46	55	58	71	50	83	66	47	58	50	15
ABCD	*LG Seeds C4780 R2	57	12.2	60	35	80	79	24	81	62	43	31	40	55	58	71	53	84	74	55	57	46	14
ABCD	**Asgrow AG4632 GENRR2Y/SR	57	11.8	66	42	69	83	27	83	57	45	21	43	58	58	70	66	86	60	48	58	48	15
ABCD	Asgrow AG4835 GENRR2Y/SR	57	12.0	61	34	75	87	24	77	57	48	23	42	55	65	76	53	85	61	49	58	51	14
ABCD	Progeny P4613 RY/STS	57	12.0	58	45	68	80	21	75	63	49	16	42	52	66	78	61	82	63	58	55	47	14
ABCDE	Dyna-Gro S48RS53 RR2Y/STS	57	12.4	57	42	75	78	26	79	58	46	27	43	58	57	81	46	83	58	54	58	49	15
ABCDE	Terral REV 49R94	57	11.7	61	45	61	77	24	77	60	44	28	41	58	52	80	61	89	58	51	59	48	14
ABCDE	Armor 49-R56 RR2	57	11.7	64	49	60	78	24	69	60	47	23	41	44	64	82	68	81	67	58	54	40	11
ABCDE	Beck's 493R4	56	12.3	71	48	54	75	26	78	67	46	25	40	58	59	70	48	89	59	51	55	52	12
ABCDEF	Beck's 465R4	56	12.1	71	44	63	75	19	78	68	46	18	42	55	55	72	60	83	53	58	56	52	12
BCDEF	Progeny P4850 RY/STS	56	12.5	62	31	78	79	26	73	59	46	27	42	54	61	70	44	84	65	53	59	52	15
BCDEFG	Mycogen 5N479R2 RR2/STS	56	12.1	59	30	74	79	25	79	61	39	26	44	52	57	75	50	85	60	52	60	50	14
CDEFGH	Steyer 4703 R2	55	12.3	63	48	67	76	23	72	55	48	23	44	47	60	78	55	78	66	51	55	38	8
DEFGH	LG Seeds C4994 R2	55	11.9	58	40	64	75	25	73	52	37	26	43	47	56	76	59	83	66	48	55	52	8
DEFGH	Warren Seed 4850 R2Y/STS	54	12.3	60	40	68	79	23	73	58	40	26	43	51	56	69	43	84	55	53	59	53	9
DEFGH	Dyna-Gro S49RY25 RR2Y	54	12.2	53	39	69	76	21	78	53	47	25	41	48	61	70	59	82	60	48	57	46	10
EFGHI	Croplan R2C 4914S	54	12.2	56	48	65	70	24	69	51	48	22	42	44	61	71	60	83	59	53	54	38	7
FGHI	Steyer 4602 R2	53	11.8	57	41	70	73	25	70	55	44	16	45	49	50	77	65	73	61	47	53	41	7
FGHI	USG 74D95RS	53	12.2	54	37	80	69	26	63	54	43	21	44	48	57	64	59	73	67	51	61	40	7
FGHI	Asgrow AG4934 GENRR2Y/SR	53	12.2	60	28	67	71	21	72	55	47	19	44	50	56	71	57	74	63	57	60	38	7
GHI	Hornbeck HBK RY4721	53	11.9	57	36	50	78	25	73	51	47	22	42	52	56	71	61	83	54	48	54	44	6
HI	Croplan R2C 4873S	53	11.9	53	46	63	70	26	68	50	38	22	43	51	62	71	58	75	54	49	55	45	5
I	USG 74A74 RS	51	12.1	54	42	75	77	22	68	55	45	24	41	48	50	68	52	79	54	46	52	39	5
I	Hornbeck CZ 4959 RY	51	11.9	59	41	61	74	24	69	50	46	24	41	51	59	72	52	76	32	46	52	42	3
	Average	55	12	60	41	69	77	24	74	58	45	24	42	52	58	74	56	82	60	51	56	46	

2015 STANDARD GROUP IV LATE SEASON (4.6 - 4.9 MATURITY)

RR SOYBEAN VARIETY TEST

(26 Varieties)



Summary from 19 County Tests			Summary from Small Plot Research													
MS	Brand/Variety	Yld	REC Milan					Jackson					West TN REC			
		bu/a	*Treated	Non-treated	Frogeye	Other Diseases	Lodging	*Treated	Non-treated	Frogeye	Other Diseases	Lodging	*Treated	Non-treated	WTREC	Other Diseases
A	**Warren Seed 4633 R2Y	59.3	60.8	55.4	LOW	SC, TS	1	54.3	50.5	LOW	SC	0	56.7	55.7	LOW	SDS
AB	Terral REV 47R34	58.3	61.0	54.5	LOW		1	49.3	48.5	LOW		2	55.7	53.3	LOW	
ABC	**Armor 47-R13 RR2/STS	57.6	60.9	54.5	LOW	SC, TS	0	55.7	49.3	MOD	SC	0	61.3	54.6	LOW	
ABCD	**Asgrow AG4632 GENRR2Y/SR	57.3	59.0	51.8	LOW	SC, TS	0	54.5	52.5	LOW	SC	1	56.3	50.9	LOW	SDS
ABCD	*LG Seeds C4780 R2	57.3	-	-	-	-	-	49.7	44.4	LOW	SC	1	52.1	51.2	LOW	
ABCD	Asgrow AG4835 GENRR2Y/SR	56.9	62.3	55.5	LOW	SC, TS	0	55.7	46.8	MOD	SC	0	57.9	53.8	LOW	
ABCD	Progeny P4613 RY/STS	56.8	57.8	49.3	MOD		2	52.0	46.9	MOD		0	59.9	53.7	MOD	
ABCDE	Dyna-Gro S48RS53 RR2Y/STS	56.6	-	-	-	-	-	53.0	48.1	MOD	SC, TS	0	59.9	54.7	MOD	SDS
ABCDE	Armor 49-R56 RR2	56.5	59.4	52.0	MOD		0	50.7	47.6	MOD		0	53.9	47.5	MOD	
ABCDE	Terral REV 49R94	56.5	57.3	52.3	LOW		3	48.3	45.6	LOW		1	53.3	51.7	LOW	SDS
ABCDE	Beck's 493R4	56.4	57.5	51.4	LOW		2	50.4	46.1	LOW		1	54.5	53.0	LOW	SDS
ABCDEF	Beck's 465R4	56.2	55.3	49.1	LOW		0	47.4	45.0	LOW		0	54.0	51.7	LOW	
BCDEF	Progeny P4850 RY/STS	56.1	-	-	-	-	-	51.1	46.0	MOD	SC, CLB	0	56.3	53.8	LOW	SDS
BCDEFG	Mycogen 5N479R2 RR2/STS	55.6	58.0	49.4	LOW	SC, TS, CLB	1	48.2	45.9	MOD	SC, CLB	0	59.8	52.8	LOW	SDS
CDEFGH	Steyer 4703 R2	55.1	61.8	53.0	MOD		0	47.7	41.9	HIGH		0	53.9	47.9	MOD	SDS
DEFGH	LG Seeds C4994 R2	54.5	56.5	52.3	LOW	SC, TS	0	50.1	47.2	LOW	SC	0	51.4	51.9	LOW	
DEFGH	Dyna-Gro S49RY25 RR2Y	54.4	59.6	52.1	MOD	SC, TS	0	47.0	44.0	MOD	SC	0	58.2	48.9	LOW	
DEFGH	Warren Seed 4850 R2Y/STS	54.4	-	-	-	-	-	48.4	44.6	MOD	SC, CLB	0	58.4	57.3	LOW	
EFGHI	Croplan R2C 4914S	53.6	59.6	47.0	HIGH		1	47.7	39.0	HIGH		0	51.4	46.7	HIGH	SDS
FGHI	Steyer 4602 R2	53.3	55.7	45.3	MOD	CLB	1	49.2	42.2	HIGH	CLB	0	54.2	47.1	HIGH	CLB
FGHI	Asgrow AG4934 GENRR2Y/SR	53.2	62.3	53.1	MOD		0	48.5	40.3	HIGH		0	49.8	41.9	HIGH	SDS
FGHI	USG 74D95RS	53.2	57.8	48.2	HIGH		1	49.2	40.2	HIGH		0	52.6	45.6	HIGH	SDS
GHI	Hornbeck HBK RY4721	52.8	57.2	53.6	LOW	SC, TS	2	53.6	48.8	LOW	TS	1	55.7	55.5	LOW	
HI	Croplan R2C 4873S	52.6	56.2	48.1	HIGH		2	50.3	43.9	HIGH		0	53.0	49.1	HIGH	
I	USG 74A74 RS	51.3	62.5	50.5	HIGH		1	47.9	41.9	HIGH		0	53.8	45.7	HIGH	SDS
I	Hornbeck CZ 4959 RY	51.1	55.4	49.5	MOD		0	50.4	45.0	MOD		0	56.6	53.4	MOD	
	Armor 4744	-	-	-	-	-	-	42.6	34.5	HIGH		0	52.5	40.7	HIGH	
	Average (bu/a)	55.3	58.8	51.3				50.1	45.1				55.3	50.7		

2014 STANDARD MG V EARLY SEASON (5.0 – 5.5 MATURITY) RR SOYBEAN VARIETY TEST

(15 Varieties X 7 Locations)

Legend

75.8	Location yield
75.8	Top yield
75.8	Yield above avg

MS	Brand/Variety	AvgYld	Moist	<i>Carlisle</i>	Crockett	Dyer	Franklin	Gibson	Lake	Madison	
		bu/a	%	plant 6/30	7/3	5/20	6/23	5/7	6/22	5/6	
A	Armor 50-R44 RR2	67.1	12.0	47.7	58.8	71.2	86.1	77.1	52.4	76.2	7
AB	USG 75J23R RR2Y	65.0	12.1	44.9	61.0	72.9	70.3	78.4	52.3	75.0	6
AB	***Asgrow AG5332 GENRR2Y	64.5	11.9	52.1	63.6	63.7	64.2	70.3	52.4	85.3	4
AB	LG Seeds C5122R2	63.3	12.0	46.6	61.1	74.6	68.3	77.0	51.2	64.6	6
AB	Progeny P5555 RY	63.1	12.3	48.5	60.9	70.8	61.4	80.1	53.2	66.9	5
AB	*Hornbeck HBK RY5221 RR2Y	62.7	12.2	44.0	56.7	72.6	70.5	81.3	47.4	66.4	3
AB	Croplan R2C5103 GENRR2Y	62.6	11.9	46.4	59.2	69.6	71.9	72.9	49.5	68.6	5
B	Asgrow AG5233 GENRR2Y/SR	62.4	12.2	45.1	57.6	71.7	67.0	69.7	50.6	74.9	5
BC	Dyna-Gro S32RY55 RR2Y	62.2	13.2	44.1	64.6	62.5	61.2	76.6	47.0	79.1	3
BC	Hornbeck HBK RY5421 RR2Y	61.3	12.1	46.0	60.1	66.3	59.7	76.9	51.2	69.2	4
BC	Armor 53-R16 RR2	61.2	12.1	44.0	57.4	71.3	59.9	72.4	53.1	70.0	2
BCD	Beck 511R4	60.8	12.1	41.2	56.9	75.3	61.6	72.5	47.9	70.0	1
CD	Croplan R2C5081 GENRR2Y	57.6	12.0	47.2	54.3	68.4	53.7	64.1	42.7	72.7	2
D	Terral REV-54R84	56.2	11.8	38.2	56.7	65.0	60.8	64.3	44.9	63.5	0
D	Dyna-Gro S54RY43 RR2Y	56.2	12.1	39.6	47.1	66.8	61.1	70.4	46.4	61.8	0
	Average (bu/a)	61.7	12.1	45.0	58.4	69.5	65.2	73.6	49.5	70.9	

2015 STANDARD MG V EARLY SEASON (5.0 – 5.5 MATURITY) RR SOYBEAN VARIETY TEST

(15 Varieties X 7 Locations)



Legend

75.8	Location yield
75.8	Top yield
75.8	Yield above avg

MS	Brand/Variety	AvgYld	Moist	Crockett	Dyer	Franklin	Gibson	Haywood	Madison	Tipton	
		bu/a	%	6/17	5/7	6/15	5/6	6/20	5/8	5/15	
A	Dyna-Gro S52RY75 RR2Y	60	12.3	56	77	66	77	39	64	39	4
AB	Progeny P5213 RR2Y	59	11.7	51	79	79	63	41	55	45	6
ABC	Armor 50-R21 RR2	58	11.8	55	78	75	58	41	57	43	6
ABC	Terral REV 55R53	57	13.3	53	76	66	69	37	58	39	4
ABC	Steyer 5002 R2	57	11.7	49	80	81	58	39	49	41	3
ABC	Dyna-Gro 32RY55 RR2Y	57	12.0	57	74	72	62	40	51	41	5
ABC	Croplan R2C 5225S	56	12.6	56	82	67	56	41	52	40	3
ABC	Asgrow AG5335 GENRR2Y/SR	56	12.4	51	75	65	53	43	53	53	2
ABC	Terral REV 52A94	56	11.5	54	68	76	57	39	60	39	2
ABC	Asgrow AG5233 GENRR2Y/SR	56	11.7	58	76	72	58	39	48	40	3
ABC	Armor AR5205 RR2	56	12.2	57	77	68	54	41	51	41	4
ABC	*USG 75J23R	55	12.3	48	75	75	58	43	46	40	2
BC	Mycogen 5N501R2 RR2	55	11.8	52	76	70	59	38	50	38	1
C	Hornbeck RY 5221 RR2Y	54	12.5	50	74	64	61	40	58	32	3
C	Beck's 511R4	54	11.6	54	71	63	61	38	52	37	2
	Average	56	12.1	53	76	71	60	40	54	41	

2015 STANDARD MG V EARLY SEASON (5.0 – 5.5 MATURITY) RR SOYBEAN VARIETY TEST



(15 Varieties)

Summary from 7 County Tests		
MS	Brand/Variety	Yld
		bu/a
A	Dyna-Gro S52RY75 RR2Y	59.7
AB	Progeny P5213 RR2Y	59.0
ABC	Armor 50-R21 RR2	58.1
ABC	Terral REV 55R53	56.9
ABC	Steyer 5002 R2	56.7
ABC	Dyna-Gro 32RY55 RR2Y	56.5
ABC	Croplan R2C 5225S	56.3
ABC	Asgrow AG5335 GENRR2Y/SR	56.1
ABC	Terral REV 52A94	56.1
ABC	Asgrow AG5233 GENRR2Y/SR	55.9
ABC	Armor AR5205 RR2	55.6
ABC	*USG 75J23R	55.0
BC	Mycogen 5N501R2 RR2	54.7
C	Hornbeck RY 5221 RR2Y	54.1
C	Beck's 511R4	53.7
	Average (bu/a)	56.4

Summary from Small Plot Research										
REC Milan					Jackson					
*Treated	Non-treated	Frogeye	Other Diseases	Lodging	*Treated	Non-treated	Frogeye	Other Diseases	Lodging	
59.9	46.9	LOW	BS	3	53.0	52.3	LOW	SC	1	
54.5	50.3	LOW	SC	1	56.0	49.4	MOD	SC, TS, CLB	0	
-	-	-	-	-	52.3	48.9	MOD	SC, SDS	0	
-	-	-	-	-	46.3	43.7	MOD		2	
54.9	49.5	LOW		1	52.1	48.7	MOD	SC, TS	0	
-	-	-	-	-	45.4	42.6	LOW	SDS	1	
-	-	-	-	-	55.7	45.5	HIGH		0	
59.2	51.1	MOD	BS	1	51.2	43.7	HIGH		0	
48.7	44.8	LOW	SC, BS	1	40.5	40.7	LOW		4	
56.2	47.6	HIGH		2	54.0	44.8	HIGH		0	
57.6	46.1	HIGH		3	54.8	45.6	HIGH		0	
-	-	-	-	-	48.9	42.2	HIGH	SC	0	
56.0	48.2	LOW	SC, TS	0	54.4	47.9	LOW	SC, TS	1	
46.0	45.0	LOW	CLB	2	48.1	43.9	LOW	TS, CLB	1	
55.7	44.6	HIGH		1	45.7	40.6	HIGH		1	
54.9	47.4				50.6	45.4				

2014 STANDARD MG IV LATE SEASON (4.6 - 5.0 MATURITY)

LIBERTY LINK SOYBEAN VARIETY TEST

(18 Varieties X 6 Locations)



Legend

75.8 Location yield

75.8 Top yield

75.8 Yield above avg

MS	Brand/Variety/Maturity	AvgYld	Moist	Franklin	Fulton	Gibson	Madison	Obion	Tipton	
		bu/a	%	plant 6/23	6/22	5/7	5/27	5/15	5/22	
A	Progeny P4930LL	54.8	13.7	41.9	50.7	54.5	81.7	70.3	29.7	5
AB	Beck 483NL	52.8	13.2	45.6	50.5	47.1	73.8	65.6	34.1	5
AB	Dyna-Gro S49LL34	52.4	13.5	39.5	50.1	48.6	80.9	64.1	31.3	5
AB	Hornbeck LL4953	52.4	13.8	37.3	50.6	54.4	77.5	64.5	29.9	4
AB	Warren Seed Micah 4400LL	52.4	13.3	45.0	49.6	65.6	58.6	62.2	33.1	5
AB	Warren Seed Micah 4800LL	52.0	13.6	33.9	54.7	54.7	78.6	63.0	27.5	4
AB	Hornbeck LL4653	51.9	13.5	43.5	51.2	69.2	58.9	56.2	32.5	4
AB	*Hornbeck LL4950	51.6	13.5	41.0	48.3	50.7	75.0	62.5	32.2	5
ABC	Hornbeck LL4850	51.4	13.2	41.8	45.3	55.8	72.4	63.3	29.8	4
ABCD	Progeny P4819LL	49.9	13.2	36.4	46.6	53.7	68.6	65.6	28.6	3
ABCD	Armor 5:01 LL	49.6	13.7	33.5	50.1	47.7	78.6	56.2	31.4	3
ABCD	Dyna-Gro S46LL05	49.1	13.7	47.2	48.3	63.3	46.6	59.5	29.7	3
ABCD	Warren Seed Micah 4900LL	48.5	14.3	32.5	44.6	46.3	78.8	60.6	28.4	1
ABCD	Beck 459L4	46.7	13.4	28.2	43.8	66.4	55.1	56.6	30.2	2
BCD	USG 74G74LS	46.0	13.7	33.5	49.4	36.2	68.5	61.6	27.0	3
BCD	Warren Seed Micah 4600LL	45.1	13.5	38.2	42.5	57.2	42.2	60.3	30.2	3
CD	Hornbeck LL4650	42.8	13.5	44.3	38.0	53.1	33.7	58.9	28.9	1
D	Armor 4:97 LL	41.7	13.5	23.2	43.0	34.9	62.6	58.7	28.1	0
	Average (bu/a)	49.5	13.5	38.1	47.6	53.3	66.2	61.6	30.1	

2015 STANDARD MG IV LATE SEASON (4.6 - 5.0 MATURITY)
LIBERTY LINK SOYBEAN VARIETY TEST
 (19 Varieties X 6 Locations)

Legend

75.8 Location yield

75.8 Top yield

75.8 Yield above avg

MS	Brand/Variety	AvgYld	Moist	Dyer (IR)	Gibson	Lake	Madison	Obion	Fulton Ky	
		bu/a	%	6/8	5/6	6/15	5/22	6/11	5/27	
A	Hornbeck CZ4748LL	61	10.3	62	66	63	35	75	67	6
AB	*Warren Seed Micah 4400LL	58	10.9	56	58	62	34	71	66	5
ABC	*Armor 501L	57	10.5	63	54	54	41	66	62	3
ABC	Warren Seed Micah 4810LL	57	10.3	57	52	61	35	70	65	6
ABC	Armor 476L	57	10.4	56	47	64	32	71	69	4
ABC	Beck's 522L4	57	10.3	61	52	54	38	66	68	4
ABC	Warren Seed Micah 4910LL	57	10.2	70	54	49	41	67	58	4
ABC	Hornbeck HBK LL4953	56	9.9	55	56	61	37	64	65	4
BCD	Dyna-Gro S46LL05	56	11.3	57	54	59	31	70	63	5
BCD	Hornbeck 4950LL	55	10.1	54	44	55	41	70	64	3
BCD	Dyna-Gro S49LL34	55	10.1	54	53	47	44	65	64	3
BCD	Progeny P4814 LL/STS	54	11.2	55	53	55	34	60	66	2
BCD	USG 74G99L	54	10.3	58	53	57	33	61	61	3
BCD	Warren Seed Micah 4800LL	54	10.2	56	52	50	39	62	62	3
BCD	Hornbeck HBK LL4653	54	10.7	54	56	59	25	70	57	3
BCD	Terral REV 51L25	52	12.1	50	48	50	25	76	65	2
CD	Terral REV 49L29	52	10.2	55	53	58	38	53	55	3
CD	Beck's 449L4	52	10.8	46	46	56	34	70	59	2
D	Progeny P4930 LL	51	10.2	52	42	47	32	66	64	1
	Average	55	10.5	56	52	56	35	67	63	

2015 STANDARD MG IV LATE SEASON (4.6 - 5.0 MATURITY)

LIBERTY LINK SOYBEAN VARIETY TEST

(19 Varieties X 6 Locations)



Summary from 6 County Tests

MS	Brand/Variety/Maturity	Yld
		bu/a
A	Hornbeck CZ4748LL	61.3
AB	*Warren Seed Micah 4400LL	57.8
ABC	*Armor 501L	56.7
ABC	Warren Seed Micah 4810LL	56.7
ABC	Armor 476L	56.5
ABC	Beck's 522L4	56.5
ABC	Warren Seed Micah 4910LL	56.5
ABC	Hornbeck HBK LL4953	56.3
BCD	Dyna-Gro S46LL05	55.7
BCD	Hornbeck 4950LL	54.7
BCD	Dyna-Gro S49LL34	54.5
BCD	Progeny P4814 LL/STS	53.8
BCD	USG 74G99L	53.8
BCD	Hornbeck HBK LL4653	53.5
BCD	Warren Seed Micah 4800LL	53.5
BCD	Terral REV 51L25	52.3
CD	Terral REV 49L29	52.0
CD	Beck's 449L4	51.8
D	Progeny P4930 LL	50.5
	Average (bu/a)	55.0

Summary from Small Plot Research

REC Milan					Jackson				
*Treated	Non-treated	Frogeye	Other Diseases	Lodging	*Treated	Non-treated	Frogeye	Other Diseases	
51.8	44.3	LOW	BS, TS	2	57.0	52.2	LOW	SC, TS, SDS	
52.7	46.5	LOW	BS	0	51.0	47.9	LOW		
52.5	46.2	LOW		1	51.3	48.0	LOW	SDS	
46.5	47.3	LOW		0	46.7	42.0	LOW	SDS	
51.7	44.9	LOW	BS	1	53.4	48.3	LOW	SDS	
53.8	46.6	LOW		0	55.9	52.4	LOW	SDS	
48.1	42.1	LOW	CLB	2	47.6	44.2	LOW	CLB	
53.6	47.7	LOW		0	51.4	47.7	LOW	SDS	
55.2	46.8	LOW	CLB	1	45.0	38.2	MOD	SC, CLB	
47.9	45.5	LOW	SDS	1	48.8	45.4	LOW	SDS	
52.8	47.9	LOW		0	-	-	-	-	
52.2	48.1	LOW		1	45.2	46.4	LOW		
44.0	38.6	LOW	SDS, CLB	1	45.2	42.2	LOW	SDS, CLB	
56.2	46.6	LOW	BS, CLB	0	48.3	45.6	MOD	SC, CLB	
48.1	42.4	LOW	SDS, CLB	0	45.0	42.5	LOW	SDS	
50.7	42.8	LOW	CLB	3	50.0	46.0	LOW	CLB	
45.4	45.3	LOW	CLB	0	46.2	41.5	LOW	SDS, CLB	
57.3	50.1	LOW	BS	3	50.2	46.4	MOD		
-	-	-	-	-	48.5	46.7	LOW	SDS	
51.1	45.5				49.3	45.8			

2015 STANDARD CONVENTIONAL SOYBEAN VARIETY TEST

(10 Varieties X 3 Locations)

Legend

75.8	Location yield
75.8	Top yield
75.8	Yield above avg

MS	Brand/Variety	AvgYld	Moist	Gibson	Lauderdale	Weakley	
		bu/a	%	7/15	6/10	6/10	
A	Ellis	61	10.2	55	52	75	3
AB	eMerge 4993	59	9.9	56	50	71	3
ABC	Progeny 5191	57	10.4	49	52	69	2
ABC	Armor 49-C3	56	10.3	48	52	69	2
ABC	USG 5002T	56	10.8	49	48	70	2
BC	eMerge 4510S	54	10.5	47	46	70	1
BC	eMerge 4892S	55	10.6	47	50	65	1
C	Armor 48-C5	53	10.4	50	43	65	1
C	USG 5601T	53	10.0	52	39	67	1
C	Progeny 4910	52	10.2	46	49	60	1
	Average	55	10.3	50	48	68	